

Term 1 Program Guide



27th January - 3rd April 2026



WHATS NEW FOR 2026

We are offering new pre-accredited courses, classes and workshops in 2026.

Digital Courses

Microbusiness for Makers
Digital Essentials L1
Digital for Microbusinesses

More information on page 3

Classes

Introduction to AI
Yoga for beginners level
Yoga for Seniors
Yoga for Intermediate Level

More information on page 7

Workshops

Beginner Sewing Skills Workshop
Chair Upholstery DIY Workshop
How to Create a Budget Using Microsoft Excel

More information on page 8

WHAT'S ON:

- Digital Courses
- More Courses
- Computer Classes
- More Classes
- Classes Continued
- Health & Wellbeing
- Workshops
- Support Groups
- Social Groups
- Vacation Care
- First Aid Training
- Room Hire
- Our Location
- Helping Hand
- Computer Usage
- Services Available
- Transport Map



10-14 Parkside Drive, Shepparton



(03) 5821 5770



(03) 5831 5181



admin@nsclc.com.au



facebook.com/nsclc



northsheppcom



www.nsclc.com.au



Mon - Fri 9am - 3:30pm During Victorian School Term

TOID # 29759

ABN: 96 172 874 155

Incorporation No. A0001745V

WHAT'S ON AT NSCLC



MONDAY

- North Shepparton Community Hub Playgroup
- Family History Group (monthly)
- Introduction to Commercial and Domestic Cleaning
- GV Health Chronic Pain Clinic

TUESDAY

- Strawberry Patchers
- Bear Making
- Open Place (10th Feb & 10th March 2026)
- MS Peer Support Group (17th Feb 2026)
- GV Health Chronic Pain Clinic

WEDNESDAY

- Community Shed
- Social Craft
- Neighbourhood Watch (4th Feb 2026)
- We Listen Suicide Loss Support Group (11th Feb & 11th March 2026)

THURSDAY

- Oil Painting
- The Applique Guild (19th Feb & 19th March 2026)
- GV Health Chronic Pain Clinic
- Royal Melbourne Hospital Pacemaker Clinic (5th Feb & 26th March 2026)

FRIDAY

- Craft for a Cause
- Alcoholics Anonymous
- Shepparton ME/ Chronic Fatigue Syndrome & Fibromyalgia Support Group (monthly)

SATURDAY

- First Aid Training 14th March 2026

DIGITAL COURSES

The courses listed below are all part of Learn Local

Day and Night
classes are available

MICROBUSINESS FOR MAKERS



This Course guides you through the process of launching a microbusiness with a creative craft or artistic practice at its core. Learners will be equipped with the knowledge and skills to launch a business by the end of the course.

Topics include:

- Understanding financial and legal responsibilities of running a business
- Establish business plan and name
- Understanding of marketing and social media fundamentals
- Set up a social media account for a business
- Understanding how to develop, launch and maintain a future-proof and resilient maker-based microbusiness

Now taking expression of interest



	Full Fee	Concession
Amenities	\$10.00	\$10.00
Resources	\$20.00	\$20.00
Admin Fee	\$5.00	\$5.00
Tuition Fee	\$16.20	\$3.24
Total	\$51.20	\$38.24

DIGITAL ESSENTIALS L1



This course is designed to help students understand the basics of technology, including different digital devices and the ways you can use these devices.

Topics include:

- Getting started
- Using your smartphone
- Using SMS
- Connecting & Working Safely
- Navigating the internet
- Using email
- Using social media
- Using apps & software
- Everyday technology
- Staying safe online

Now taking Expression of interest



	Full Fee	Concession
Amenities	\$15.00	\$15.00
Resources	\$15.00	\$15.00
Admin Fee	\$49.50	\$49.50
Tuition Fee	\$32.40	\$6.48
Total	\$111.90	\$85.98



DIGITAL FOR MICROBUSINESSES

Great course to complete in conjunction with the Microbusiness for Makers

Topics include:

- Microbusiness
- Business Digital Presence
- Marketing & Advertising
- Digital Tools
- Digital Security, legislation, policies

Now taking Expression of interest



	Full Fee	Concession
Amenities	\$15.00	\$15.00
Resources	\$25.00	\$25.00
Admin Fee	\$49.50	\$49.50
Tuition Fee	\$32.40	\$6.48
Total	\$111.90	\$85.98

MORE COURSES

The courses listed below are all part of Learn Local

Day and Night
classes are available



INTRODUCTION TO COMMERCIAL AND DOMESTIC CLEANING

Come and learn about commercial and domestic cleaning, how to select the right products and equipment for jobs and use appropriate techniques to ensure a thorough clean. Cleaning equipment and facilities are utilised to simulate the work environment for participants to clean like a Pro.

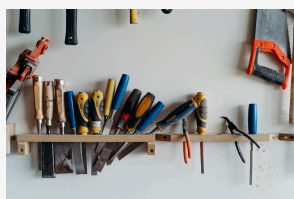
Topics include:

- Maintain storage area and cleaning equipment
- Participate in workplace safety arrangements
- Clean hard floor surfaces
- Clean carpeted floors
- Perform basic stain removal from carpets
- Maintain glass surfaces
- Maintain external surfaces
- And much more

Starting Monday 9th February 2026

Time: 9am - 3pm

	Full Fee	Concession
Amenities	\$15.00	\$15.00
Resources	\$10.00	\$10.00
Admin Fee	\$49.50	\$49.50
Tuition Fee	\$32.40	\$6.48
Total	\$106.90	\$80.98



TOOLS FOR TRADE

This course is a basic introduction "taster course" of various industry fields, covering components you with small jobs around your home, plaster up holes, basic car maintenance

such as checking oil, changing a tire, wiper blades etc. and how to maintain a lawn mower such as replacing or cleaning spark plugs, replacing of petrol and oil, blade sharpening and repairs.

7 - Week Duration, (3 Hour Sessions)

Taking expression of interest

	Full Fee	Concession
Amenities	\$15.00	\$15.00
Resources	\$20.00	\$20.00
Admin Fee	\$49.50	\$49.50
Tuition Fee	\$22.60	\$4.50
Total	\$107.10	\$89.00



UKULELE FOR BEGINNERS

If you have always wanted to learn how to play the Ukulele, then we have the group for you. You will learn basic knowledge and music terms, listening skills and loads more.

Duration: 15 hours

Day Class Starting

Date: Tuesday 5th May, 2026

Time: 10am - 12pm

Night Class Starting

Date: Monday 4th May, 2026

Time: 6pm - 8pm

	Full Fee	Concession
Amenities	\$10.00	\$10.00
Resources	\$10.00	\$10.00
Admin Fee	\$20.00	\$20.00
Tuition Fee	\$16.20	\$3.24
Total	\$56.20	\$43.24

COMPUTER CLASSES

The courses listed below are all part of Learn Local

Day and Night
classes are available



BEGINNERS COMPUTERS

For those unsure of what they are doing, you will learn the basics of your computer in smaller class environment. This course covers topics such as: Turning on/off the computer, navigating & manipulating the desktop, creating files and folders, how to print, workspace safety, identifying & developing keyboard skills, how to do computer maintenance, security checks and updates as well as learning a variety of other things to make using a computer easier for Windows 11. Also suitable for those using Windows 10.

Now taking expression of interest

	Full Fee	Concession
Amenities	\$15.00	\$15.00
Resources	\$15.00	\$15.00
Admin Fee	\$49.50	\$49.50
Tuition Fee	\$32.40	\$6.48
Total	\$111.90	\$85.98



INTERMEDIATE COMPUTERS

This course provides you with the knowledge of using Microsoft Word 2016, navigating the internet and all things email.

Now taking expression of interest

	Full Fee	Concession
Amenities	\$15.00	\$15.00
Resources	\$15.00	\$15.00
Admin Fee	\$49.50	\$49.50
Tuition Fee	\$32.40	\$6.48
Total	\$111.90	\$85.98



USING MICROSOFT OFFICE

This class is an introduction to Microsoft Word, Publisher, Excel and PowerPoint. By the end of this course, you will be able to create a spreadsheet, word document, slide show or presentation as well as publications such as newsletters and invitations.

Now taking expression of interest

	Full Fee	Concession
Amenities	\$15.00	\$15.00
Resources	\$25.00	\$25.00
Admin Fee	\$49.50	\$49.50
Tuition Fee	\$37.80	\$7.56
Total	\$127.30	\$97.06

MORE CLASSES

GETTING STARTED WITH FAMILY HISTORY WORKSHOPS

Are you interested in learning more about your family history? Would you like to explore your family history, or do you have another intriguing question on your mind?

Researching your family history can be a deeply rewarding journey, uncovering the stories and connections that shaped your family's past. Our workshops will help you discover your family history and build family trees.

Enjoy the adventure! Each workshop runs for 2 hours

Workshop 1

Creating an Account & Features of Ancestry including Ancestry DNA Kits

Workshop 2

Navigating Ancestry and Creating Your Tree

Workshop 3

Finding Records and Information Using Ancestry and Public Records: Search for vital records (birth, marriage, death), census records, military records, and immigration records.



Now taking expression of interest

INTRODUCTION TO CANVA

Unleash Your Creativity: Master Canva with Our Beginner's Course!

Canva is a simple and intuitive graphic design platform.

It is good for social media posts, presentations, brochures, posters and other visual content.

Do you want to create eye-catching graphics, posters, brochures, invites, and engaging social media posts without any design experience? Our Using Canva Course is your gateway to professional-quality visuals!

What You'll Learn:

- Navigate Canva's intuitive interface like a pro
- Design captivating posters, flyers, and invitations
- Create social media posts that grab attention
- Customize templates to suit your style and needs

Why This Course? With our hands-on approach and expert guidance, you'll quickly learn how to harness the full potential of Canva. Say goodbye to bland designs and hello to vibrant, professional-quality creations that stand out!

Times: One 4hr Session

Cost: \$32 (\$27 Concession)

Now taking expression of interest



INTRODUCTION TO AI: GETTING THE MOST OUT OF AI



This interactive workshop will introduce you to the world of AI and CHATGPT. With an incredible ability to help you save time and boost productivity, we will explore hands on activities to get you confident in using ChatGPT in everyday tasks such as communications, advertising and grant writing. Learn the Basics of AI: Understand artificial intelligence concepts and applications.

Cost: \$10.00 per person

Now taking expression of interest

CLASSES CONTINUED



YOGA

Want to relax, stretch and recharge? Ever tried yoga at home and ended up tangled like a pretzel. Join us in discovering the joy of yoga through our interactive online video sessions! - watch together follow along and feel the benefits!

Work at your own pace, modify poses as needed and be part of a friendly, supportive community. NO experience needed.

NEW!

Benefits to yoga include:

- Enhance mobility and flexibility
- engage in low-impact, senior- friendly sequences
- build a sense of community

Bring a mat, smile and gold coin.

Yoga for Seniors

Date:

Time:

Cost:

Yoga for Beginners

Date:

Time:

Cost:

Yoga for Intermediate Level

Date:

Time:

Cost:

ONE-ON-ONE COMPUTER TUTORING

Personalised Computer Lessons: One-to-One Tutoring for All Skill Levels!

Are you ready to boost your computer skills with personalised guidance? Our One-to-One Computer Lessons offer tailored instruction to help you achieve your goals, whether you're a complete beginner or looking to advance your knowledge.

Why Choose Us? With our personalised approach, you'll receive the focused attention you need to succeed. Our lessons are designed to be engaging, practical, and tailored to your individual learning style.

Ready to take your computer skills to the next level? Book your lessons now and start learning with confidence!



Cost: \$40 per hour. Please call 5821 5770 to book.

HEALTH & WELLBEING

PACEMAKER CLINIC

The Royal Melbourne Hospital's Cardiology Department is running a Pacemaker clinic for patients here at the North Shepparton Community and Learning Centre.

Bookings are Essential.

Please call the Royal Melbourne Cardiology Department on (03) 9342 7133 for more information.

When: Thursday - 5/2, 26/3

Time: 9am - 4:30pm

WORKSHOPS



SEWING SKILLS WORKSHOPS

Are you ready to try something creative, fun and totally beginner-friendly? Join our Sewing for Everyone Workshops and discover the joy of making handmade items. **No Experience needed.**

NEW!

Workshop 1- How to hem clothing such as pants, dresses, uniforms for work and school.

Workshop 2- How to do simple repairs

Workshop 3 - Sewing machine basics

Workshop 4- Make your own Scrunchies

Workshop 5- Create your first tote bag

Cost- \$8 per workshop

\$35 for all 5

Spaces are limited! Reserve your spot today.

Now taking expression of interest

UPHOLSTERY CHAIR WORKSHOP- Learn to Transform Your Furniture!



Do you have a chair (or not) that you've always wanted to restore or completely revamp? Discover the art of upholstery in this hands-on two-day workshop!

Whether you wanted to give an old chair new life or start your journey into furniture restoration, this course equips you with the essential skills to complete your own project.

What You Will Learn:

- Stripping back an old chair and preparing the frame
- Choosing and measuring fabric effectively
- Cutting foam and stretch elastic webbing
- Edge rolls, tacks and finishing techniques for a professional result

NEW!

Tools and Materials:

All necessary tools provided, including safety gear

Bring your chair: fixed upholstery, drop-in seat, stool or use a chair provided

Optional: bring your preferred fabrics or choose from our selection

Cost: \$90 chair provided

\$60 bring your own chair

Now taking expression of interest



HOW TO CREATE A BUDGET USING MICROSOFT EXCEL

Take control of your Finances with Microsoft Excel!

Are you ready to master your money and build a clearer financial future?

Join our hands-on 3-hour workshop and learn how to create, manage and track a personal or household budget using Microsoft Excel!

NEW!

What You Will Learn:

- Step by step guidance for creating a budget spreadsheet
- Categorising income and expenses efficiently
- Using formulas to calculate totals, savings and projections
- Designing charts and graphs to visualise your spending habits
- Tips for setting financial goals and monitoring progress

Who Should Attend:

- Beginners new to budgeting
- Anyone looking to gain confidence in Excel
- Anyone wanting to improve financial planning and savings

Bonus: Each participant will receive a ready - to - use budgeting template for Excel.

Cost: \$15

Now taking expression of interest

SUPPORT GROUPS

MS PEER SUPPORT



This is a support group for people living with multiple sclerosis and carers. We are an active group splitting our meetings between education and actively participating in an external outing/ event program. Members are empowered, gain self-esteem and self-respect through participation of our educational sessions, research information and trying new activities.

When: Tuesday bi-monthly - 17/2

Time: 9:30am - 12:45pm

Phone: 1800 042 138 for more information

OPEN PLACE



Open Place is a support group & advocacy service that co-ordinates and provides direct assistance to address the needs of people who grew up in Victorian orphanages and children's homes during the last century.

Day: Second Tuesdays of the Month - 10/2, 10/3

Time: 11:30m - 2:30pm

WE LISTEN SUICIDE LOSS SUPPORT GROUP



When someone dies by suicide, the loved ones left behind often must deal with an array of their own emotions. It can be difficult to discuss with people who have not had the same experience. Some people feel that they are not able to share their feelings or story due to stigma or suicide being a taboo topic. This support group is a safe supporting space to share your grief, and support others.

Day: Second Wednesday of the month - 11/02, 11/03

Time: 6pm - 7:30pm

Email: admin@welisten.org.au for more information

Facebook page: We Listen Suicide Loss Support Group

Phone: Steve on 0400 314 858

ALCOHOLICS ANONYMOUS



Having trouble with alcohol? Does your drinking worry you? Is it causing you to get into unpleasant or dangerous situations? Are family members in need? Complaining about your drinking? Then the AA program of recovery may be able to help you!

Day: Every Friday including public & school holidays

Time: 8pm - 9:30pm

SHEPPARTON ME/ CHRONIC FATIGUE SYNDROME & FIBROMYALGIA SUPPORT GROUP



We offer support to the sufferer, their family and or carers. We provide information, friendship, understanding and empathy from other sufferers. Occasionally we also have various professional guest speakers attend meetings. Gold coin donation to cover the cost of refreshments. There is a Facebook page for those who are unable to attend due to health or other commitments.

Facebook page: Shepparton ME/CFS & Fibromyalgia Support Group

Email: georgie_girl_13@me.com for more information

Day: Second Friday of the month -

Time: 10:30am -12:30pm

Phone: Georgie on (03) 5821 0988 or 0423 358 177



North Shepparton Community & Learning Centre is supported by the Victorian Government:

SOCIAL GROUPS

NORTH SHEPPARTON COMMUNITY HUB PLAYGROUP



This playgroup is free, and suitable for children of all ages (birth up to Pre-school age) Our sessions include a variety of art and craft activities, sensory play such as play dough and story time and rhyme time fun! Free tea/coffee/milo. All parents, carers and their children are most welcome to attend.

Feel free to give Jen a call on - 0488 567 038 for further information

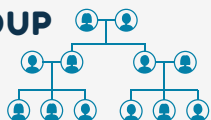
Day: Every Monday (Victorian School Term only)

Time: 9:30am - 11am

Cost: Free



FAMILY HISTORY GROUP



Family history social group meets up once a month to

Day: 4th Monday of Every Month (Victorian School Term only)

Time: 10am - 12:00pm

Cost: Free

STRAWBERRY PATCHERS

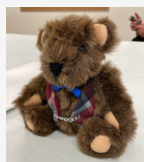
A quilting group

Day: Every Tuesday (Victorian School Term only)

Time: 9am - 12:00pm

Cost: \$2

BEAR MAKING



Come along and learn how to make your very own teddy bear. Every 4 weeks you will make a new bear. Everything you need is provided. All bears are hand sewn. **Bookings Essential.**

Day: Every Tuesday (Victorian School Term only)

Time: 12:30pm - 3pm

Cost: Maximum \$14 a bear (Price will vary from bear to bear)

For more information please call reception on (03) 5821 5770

COMMUNITY SHED



If you like creating things with your hands, why not come and check out our Community Shed. The shed is open to all those 17 years and over. If you would like more information, call us on (03) 5821 5770 or pop into the centre. **All Welcome**

Day: Every Wednesday (Victorian School Term only)

Time: 9am - 3pm

Cost: Free

NEW DAY

SOCIAL CRAFT



Do you enjoy crafting but are sick of doing them at home alone? Would you like to meet new people who also enjoy crafting. Then this could be the group for you.

Bring along your craft project and have a chat with the group.

Day: Every Wednesday (Victorian School Term only)

Time: 11am - 2:30pm

Cost: Free

THE APPLIQUE GUILD

The Applique Guild of Australia (TAG) is a group of patch workers who are interested in the Applique technique, both by hand and machine. Come along have a chat, applique and share your techniques and accomplishments.

Phone: Gael on 0458 215 794 for more information

Day: Thursday once a month - 19/2, 19/3

Time: 10am - 1pm

Cost: \$5

OIL PAINTING



The Oil Painting group is fun and social. Come along with your own materials (canvases & paints not supplied), have a chat & some laughs while working along at your own pace.

Day: Every Thursday (Victorian School Term only)

Time: 1pm - 3pm

Cost: Free

CRAFT FOR A CAUSE



Craft for a Cause is a group of volunteers who knit and crochet items to donate to people in need. The group is seeking volunteers to help continue the great work they already do. If this sounds like something you would like to be a part of bring along some lunch, have a chat and create something beautiful.

Day: Every Friday (Victorian School Term only)

Time: 10am - 1:00pm

Cost: Free

VACATION CARE



**School Holiday Program
Dates For 2026**

12th January - 23rd January, 2026
6th April - 17th April, 2026
29th June - 10th July, 2026
21st September - 2nd October, 2026

Do you work during the school holidays and need care for your primary school aged children?

NSCLC runs a school holiday program 2 weeks of every Victorian School Holidays with fun activities and excursions to suit primary school aged children's interests.

Days: Monday to Friday (excluding public holidays)

Venue: North Shepparton Community Hub
10-14 Parkside Drive, Shepparton, Victoria

Cost: \$7.97 - \$55 a day

Childcare Subsidy (CCS) is available for eligible families.

COMPUTER USAGE

Internet and computers are available for the community to use during non-computer class times. Please call to make sure they are available to save disappointment. Users must check in at reception upon arrival.

Cost: Free usage

.10 cents per printed sheet

SERVICES AVAILABLE

- Photocopying and Printing
 - black and white A4 Single Sided .10 cents, A4 Double Sided .20 cents
 - colour A4 Single Sided .20 cents, A4 Double Sided .40 cents
- Scanning - \$2.00 per transmission
- Emailing - \$2.00 per transmission
- Laminating- A4 \$3.00, A3 \$4.00
- Passport Application and Renewal - \$15
- Birth/ Marriage Certificate Application - \$5
- Citizenship Certificate Application- \$5
- Working with Children's check or Police Check- \$5
- MyGov, Centrelink - \$10 per half hour
- Other online and tech support - \$15 per half hour
- Typing and resume writing, would you like your resume or CV typed and printed?

Call in to discuss about our staff assisting you with your presentation.

Resume - \$25.00

Cover Letter - \$10.00

FIRST AID TRAINING

PROVIDED BY:



HLTAID009-Provide Cardiopulmonary Resuscitation (CPR)

Cost: \$70

When: 14th March, 2026

Time: 9am - 11am

HLTAID011 - Provide First Aid

This is a short course designed to develop the knowledge and skills to provide basic first aid and manage the casualty(s) and the incident.

Cost: \$175

When: 14th March, 2026

Time: 9am - 1pm

HLTAID012 - Provide First Aid in an Education and Care Setting

This unit specifies the outcomes required to provide first aid in a range of education and care settings to manage the incident and response and communicate with others involved in the treatment or response.

(Includes Asthma and Anaphylaxis training)

Cost: \$225

When: 14th March, 2026

Time: 9am - 4pm

22556VIC - Course in Management of Asthma Risks and Emergencies in the Workplace

This course is designed to develop the skills and knowledge to enable the giving of assistance to a person having an asthma attack in the workplace administer with the casualty(s) own asthma bronchodilator medication or the organisations asthma first aid equipment.

Cost: \$65

When: 14th March, 2026

22578VIC - Course in First Aid Management of Anaphylaxis

This will provide participants with the skills and knowledge to assist a person suffering & anaphylactic reaction until the arrival of medical assistance.

Cost: \$65

When: 14th March, 2026

Updates and Combined Classes

- Anaphylaxis & Asthma Management - **Cost:** \$115
- CPR Update - **Cost:** \$70
- Level 2 First Aid, Anaphylaxis & Asthma Management - **Cost:** \$225
- Anaphylaxis, CPR & Asthma Management - **Cost:** \$175

A USI number will be required to complete any of the above courses.

To create one
if you do not already have one,
please go to www.usi.gov.au
or contact our office on (03) 5821 5770
for assistance.



We can organise group bookings for over 15 people. These courses can be customised to the individual group needs. Please call us on (03) 5821 5770 to organise individualised training for your organisation.

FEES AND DATES ARE
SUBJECT TO CHANGE

ROOM HIRE



North Shepparton Community & Learning Centre has rooms available to be booked for training sessions, meetings, support and social groups.
(Conditions apply)

All rooms have a hire fee.

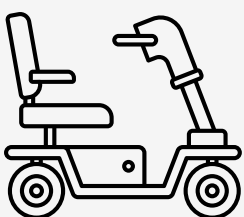
Hire fees range from \$10 - \$180

For more information phone reception on (03) 5821 5770

FINANCIAL MEMBERSHIP

Would you like to have a say concerning your community & learning centre? You can do so by becoming a financial member for just \$3.00 a year. Please pop in and fill out a membership form.

DISABILITY ACCESS



NSCLC welcomes all members of the community and provides disabilities access to all facilities. Motorised scooter users are welcome to recharge their scooters on site.

SUGGESTIONS

Do you have a skill or interest you would like to share with others?

If so, then pop into North Shepparton Community & Learning Centre and share your ideas with us! Perhaps you are part of a support or social group looking for somewhere to meet. Pop in for a chat and have a look at the rooms available or give reception a call on (03) 5821 5770.

OUR LOCATION



North Shepparton Community & Learning Centre is located in the North Shepparton Hub at 10-14 Parkside Drive, Shepparton. To get to us travel north out of Shepparton on Numurkah Rd/ Goulburn Valley Highway, turn left into Brauman Street. Stay on this street as it becomes Parkside Drive after the roundabout. We are on the left hand side opposite Banmira Specialist School Junior Campus. The town bus route stops beside the hub and we have a car-park for those driving available at the Hub itself.

SUDOKU

			4		2			
7	1			3			4	6
4		8		7		5		9
2			8		9			5
	8						9	
9			6		3			2
8		7		6		3		4
6	5			9			1	7
				5				

1				8				9
	5		6		1		2	
			5		3			
	9	6	1		4	8	3	
3				6				5
	1	5	9		8	4	6	
			7		5			
	8		3		9		7	
5				1				3

HELPING HAND

FREE SHOWER

If your bathroom is being renovated or your homeless and need a shower, you can come to the hub and use our showers. We also have towels and toiletries available.



POP IN FOR A CHAT

Come and have a chat at any time you don't need a reason to pop in and say hello. If the weather is hot outside and you need a place to cool down your welcome to come in and enjoy our air conditioning and grab a cool drink.



BOOK NOOK

If you like to read then we have the nook for you. We have set up a book nook in our foyer for anyone to read, swap, keep or borrow. We have a large range of books and magazines on offer.



COMMUNITY CLOTHES RACK AND BRICK A BRAC



We also have a range of bric a brac and other household items available. Come in and have a look you never know what you might find.

Why not pop in and check out our FREE clothes area. We have adults and kids clothing available. There are items for all occasions. Clothes are being added all the time. Make sure you pop in regularly to check out what's been added.



Shepparton bus network



MAP NOT TO SCALE
Effective December 2023



Department of Transport and Planning

For more public transport information visit ptv.vic.gov.au, use the **PTV app** or call **1800 800 007**.

Authorised by the Department of Transport and Planning, 1 Spring Street, Melbourne



The North Shepparton Community Hub is accessible from the following bus route:

Route 2: Parkside Gardens via The Boulevard

Route 3: Golf Drive/ TAFE