

# Term 3 Program Guide



13<sup>th</sup> July - 18<sup>th</sup> September 2026

NEW

## THE WARM CUP CONNECTION

Join us for a relaxed and welcoming get-together over a tea or coffee. A great opportunity to meet new people, enjoy friendly conversation, and connect with others in the community.



Whether you're new to the area, looking to make friends, or simply enjoy a good chat, everyone is welcome.

Come along, stay for as little or as long as you like.  
Tea, coffee, and light refreshments provided

**When:** Wednesdays (during school term)

**Time:** 10:00am - 11:30am


**Cost:** Coin donation




## WHAT'S ON:


- Digital Courses
- Other Classes
- Computer Classes
- Health & Wellbeing
- Workshops
- Support Groups
- Social Groups
- Vacation Care
- First Aid Training
- Room Hire
- Our Location
- Helping Hand
- Computer Usage
- Services Available
- Transport Map
- Tax Help


 10-14 Parkside Drive, Shepparton

 (03) 5821 5770

 (03) 5831 5181

 admin@nslc.com.au

 facebook.com/nslc

 northsheppcom

 www.nslc.com.au

 Mon - Fri 9am - 3:30pm During Victorian School Term

TOID # 29759

ABN: 96 172 874 155

Incorporation No. A0001745V

# WHAT'S ON AT NSCLC



## MONDAY

- North Shepparton Community Hub Playgroup
- Family History Group (4<sup>th</sup> Monday)
- GV Health Chronic Pain Clinic
- Tax Help (mid July - end of October)
- Intro to Commercial & Domestic Cleaning (Starts 3<sup>rd</sup> August)
- Sewing Group (20<sup>th</sup> June, 3<sup>rd</sup>, 17<sup>th</sup>, 31<sup>st</sup> August & 14<sup>th</sup> September)

## TUESDAY

- Strawberry Patchers
- Bear Making
- NSCLC AGM (25<sup>th</sup> August)
- Tax Help (end of July - October)
- MS Peer Support Group (18<sup>th</sup> August)
- GV Health Chronic Pain Clinic

## WEDNESDAY

- Community Shed
- Social Craft
- The Warm Cup Connection
- Neighbourhood Watch bi-monthly (5<sup>th</sup> August)
- We Listen Suicide Loss Support Group (12<sup>th</sup> August & 9<sup>th</sup> September)

## THURSDAY

- Oil Painting
- The Applique Guild (16<sup>th</sup> July, 20<sup>th</sup> August & 17<sup>th</sup> September)
- GV Health Chronic Pain Clinic
- Royal Melbourne Hospital Pacemaker Clinic (3<sup>rd</sup> September)

## FRIDAY

- Craft for a Cause
- Alcoholics Anonymous
- Seated Yoga
- Intermediate Computers

## SATURDAY

## SUNDAY

# DIGITAL COURSES

The courses listed below are all part of Learn Local

Day and Night  
classes are available

## MICROBUSINESS FOR MAKERS



This Course guides you through the process of launching a microbusiness with a creative craft or artistic practice at its core. Learners will be equipped with the knowledge and skills to launch a business by the end of the course.

### Topics include:

- Understanding financial and legal responsibilities of running a business
- Establish business plan and name
- Understanding of marketing and social media fundamentals
- Set up a social media account for a business
- Understanding how to develop, launch and maintain a future-proof and resilient maker-based microbusiness

Now taking expression of interest

	Full Fee	Concession
Amenities	\$10.00	\$10.00
Resources	\$20.00	\$20.00
Admin Fee	\$5.00	\$5.00
Tuition Fee	\$16.20	\$3.24
<b>Total</b>	<b>\$51.20</b>	<b>\$38.24</b>

## DIGITAL ESSENTIALS L1



This course is designed to help students understand the basics of technology, including different digital devices and the ways you can use these devices.

### Topics include:

- Getting started
- Using your smartphone
- Using SMS
- Connecting & Working Safely
- Navigating the internet
- Using email
- Using social media
- Using apps & software
- Everyday technology
- Staying safe online

Now taking Expression of interest

	Full Fee	Concession
Amenities	\$15.00	\$15.00
Resources	\$15.00	\$15.00
Admin Fee	\$49.50	\$49.50
Tuition Fee	\$32.40	\$6.48
<b>Total</b>	<b>\$111.90</b>	<b>\$85.98</b>

## DIGITAL FOR MICROBUSINESSES



Great course to complete in conjunction with the Microbusiness for Makers

### Topics include:

- Microbusiness
- Business Digital Presence
- Marketing & Advertising
- Digital Tools
- Digital Security, legislation, policies

Now taking Expression of interest

	Full Fee	Concession
Amenities	\$15.00	\$15.00
Resources	\$25.00	\$25.00
Admin Fee	\$49.50	\$49.50
Tuition Fee	\$32.40	\$6.48
<b>Total</b>	<b>\$111.90</b>	<b>\$85.98</b>

# MORE COURSES

The courses listed below are all part of Learn Local

Day and Night  
classes are available



## INTRODUCTION TO COMMERCIAL AND DOMESTIC CLEANING

Come and learn about commercial and domestic cleaning, how to select the right products and equipment for jobs and use appropriate techniques to ensure a thorough clean. Cleaning equipment and facilities are utilised to simulate the work environment for participants to clean like a Pro.

Topics include:

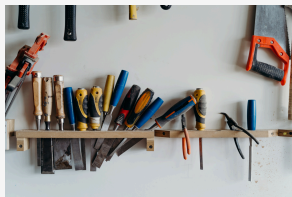
- Maintain storage area and cleaning equipment
- Participate in workplace safety arrangements
- Clean hard floor surfaces
- Clean carpeted floors
- Perform basic stain removal from carpets
- Maintain glass surfaces
- Maintain external surfaces
- And much more

**Date:** 3<sup>rd</sup> August

**Time:** 9:30am - 3pm

	Full Fee	Concession
<b>Amenities</b>	\$15.00	\$15.00
<b>Resources</b>	\$10.00	\$10.00
<b>Admin Fee</b>	\$49.50	\$49.50
<b>Tuition Fee</b>	\$32.40	\$6.48
<b>Total</b>	\$106.90	\$80.98

## TOOLS FOR TRADE



This course is a basic introduction "taster course" of various industry fields, covering components you with small jobs around your home, plaster up holes, basic car maintenance

such as checking oil, changing a tire, wiper blades etc. and how to maintain a lawn mower such as replacing or cleaning spark plugs, replacing of petrol and oil, blade sharpening and repairs.

**7 - Week Duration, (3 Hour Sessions)**

**Taking expression of interest**

	Full Fee	Concession
<b>Amenities</b>	\$15.00	\$15.00
<b>Resources</b>	\$20.00	\$20.00
<b>Admin Fee</b>	\$49.50	\$49.50
<b>Tuition Fee</b>	\$22.60	\$4.50
<b>Total</b>	\$107.10	\$89.00

## UKULELE FOR BEGINNERS



If you have always wanted to learn how to play the Ukulele, then we have the group for you. You will learn basic knowledge and music terms, listening skills and loads more.

**Duration: 15 hours**

**Taking expression of interest**

	Full Fee	Concession
<b>Amenities</b>	\$10.00	\$10.00
<b>Resources</b>	\$10.00	\$10.00
<b>Admin Fee</b>	\$20.00	\$20.00
<b>Tuition Fee</b>	\$16.20	\$3.24
<b>Total</b>	\$56.20	\$43.24

# COMPUTER CLASSES

The courses listed below are all part of Learn Local

Day and Night  
classes are available



## BEGINNERS COMPUTERS

For those unsure of what they are doing, you will learn the basics of your computer in smaller class environment. This course covers topics such as: Turning on/off the computer, navigating & manipulating the desktop, creating files and folders, how to print, workspace safety, identifying & developing keyboard skills, how to do computer maintenance, security checks and updates as well as learning a variety of other things to make using a computer easier for Windows 11. Also suitable for those using Windows 10.

**Taking expression of interest**

	Full Fee	Concession
Amenities	\$15.00	\$15.00
Resources	\$15.00	\$15.00
Admin Fee	\$49.50	\$49.50
Tuition Fee	\$32.40	\$6.48
<b>Total</b>	<b>\$111.90</b>	<b>\$85.98</b>



## INTERMEDIATE COMPUTERS

This course provides you with the knowledge of using Microsoft Word 2016, navigating the internet and all things email.

**Starting:** Friday 31<sup>st</sup> July

**Time:** 9:45am - 12:45pm

	Full Fee	Concession
Amenities	\$15.00	\$15.00
Resources	\$15.00	\$15.00
Admin Fee	\$49.50	\$49.50
Tuition Fee	\$32.40	\$6.48
<b>Total</b>	<b>\$111.90</b>	<b>\$85.98</b>



## USING MICROSOFT OFFICE

This class is an introduction to Microsoft Word, Publisher, Excel and PowerPoint. By the end of this course, you will be able to create a spreadsheet, word document, slide show or presentation as well as publications such as newsletters and invitations.

**Taking expression of interest**

	Full Fee	Concession
Amenities	\$15.00	\$15.00
Resources	\$25.00	\$25.00
Admin Fee	\$49.50	\$49.50
Tuition Fee	\$37.80	\$7.56
<b>Total</b>	<b>\$127.30</b>	<b>\$97.06</b>

# MORE CLASSES

## GETTING STARTED WITH FAMILY HISTORY WORKSHOPS

Are you interested in learning more about your family history? Would you like to explore your family history, or do you have another intriguing question on your mind?

Researching your family history can be a deeply rewarding journey, uncovering the stories and connections that shaped your family's past. Our workshops will help you discover your family history and build family trees.

Enjoy the adventure! Each workshop runs for 2 hours

### Workshop 1

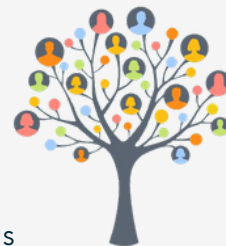
Creating an Account & Features of Ancestry including Ancestry DNA Kits

### Workshop 2

Navigating Ancestry and Creating Your Tree

### Workshop 3

Finding Records and Information Using Ancestry and Public Records: Search for vital records (birth, marriage, death), census records, military records, and immigration records.



**Now taking expression of interest**

---

## INTRODUCTION TO CANVA

### Unleash Your Creativity: Master Canva with Our Beginner's Course!

Canva is a simple and intuitive graphic design platform.

It is good for social media posts, presentations, brochures, posters and other visual content.

Do you want to create eye-catching graphics, posters, brochures, invites, and engaging social media posts without any design experience? Our Using Canva Course is your gateway to professional-quality visuals!

#### What You'll Learn:

- Navigate Canva's intuitive interface like a pro
- Design captivating posters, flyers, and invitations
- Create social media posts that grab attention
- Customize templates to suit your style and needs

**Why This Course?** With our hands-on approach and expert guidance, you'll quickly learn how to harness the full potential of Canva. Say goodbye to bland designs and hello to vibrant, professional-quality creations that stand out!

**Times:** One 4hr Session

**Cost:** \$32 (\$27 Concession)

**Now taking expression of interest**

---



## INTRODUCTION TO AI: GETTING THE MOST OUT OF AI

This interactive workshop will introduce you to the world of AI and CHATGPT. With an incredible ability to help you save time and boost productivity, we will explore hands on activities to get you confident in using ChatGPT in everyday tasks such as communications, advertising and grant writing. Learn the Basics of AI: Understand artificial intelligence concepts and applications.

**Cost:** \$10.00 per person

**Now taking expression of interest**

# CLASSES CONTINUED

## SEWING GROUP



Everyone is welcome! Whether you're a beginner or an experienced sewer, come and learn new skills, share ideas, and enjoy sewing together. Whether you need help fixing a hem, repairing a favourite garment, or making progress on a project you've been meaning to finish, guidance and support will be on hand.

Bring along your sewing, connect with others, and build your skills in a friendly and welcoming space.

**When:** Fortnightly from 20<sup>th</sup> July

**Time:** 10am - 12pm

**Cost:**

---

## ONE-ON-ONE COMPUTER TUTORING

Personalised Computer Lessons: One-to-One Tutoring for All Skill Levels!

Are you ready to boost your computer skills with personalised guidance? Our One-to-One Computer Lessons offer tailored instruction to help you achieve your goals, whether you're a complete beginner or looking to advance your knowledge.

**Why Choose Us?** With our personalised approach, you'll receive the focused attention you need to succeed. Our lessons are designed to be engaging, practical, and tailored to your individual learning style.

Ready to take your computer skills to the next level? Book your lessons now and start learning with confidence!



**Now taking bookings**

**Cost:** \$40 per hour. Please call 5821 5770 to book.

# TAX HELP



Tax Help volunteers are ready to help you!  
Need assistance completing your tax return?  
The Australian Taxation Office (ATO) can help.

The ATO's community-based Tax Help program is a free and confidential service open to people earning \$70,000 or less each year.

From mid-July to the end of October, ATO-trained volunteers can help you lodge your return, claim a refund of franking credits, submit a non-lodgment advice or lodge an amendment. They can also help you create a myGov account and link to the ATO.

Tax Help volunteers are available in person at Tax Help centres across Australia, online and by phone, so you can get help no matter where you are located.

For more information about the Tax Help program, visit [ato.gov.au/taxhelp](http://ato.gov.au/taxhelp) or call 13 28 61.

**To see if you are eligible or to book an appointment call us on 5821 5770**

# HEALTH & WELLBEING

## YOGA



Want to relax, stretch and recharge? Ever tried yoga at home and ended up tangled like a pretzel. Join us in discovering the joy of yoga through our interactive online video sessions! - watch together follow along and feel the benefits!

Work at your own pace, modify poses as needed and be part of a friendly, supportive community. NO experience needed.

### Benefits to yoga include:

- Enhance mobility and flexibility
- engage in low-impact, senior- friendly sequences
- build a sense of community

**Bring a mat (not required just for your comfort), smile and gold coin.**

### Chair Yoga & Other Exercises

**Date:** Every Friday for Term 3

**Time:** 10:00am - 10:45am

**Cost:** Gold Coin Donation  
15 - 30 minute sessions

### Yoga for Beginners

**Date:** Every Friday for Term 2

**Time:** 11:15am - 12:15pm

**Cost:** Gold Coin Donation  
20 - 30 minute sessions

**Book Your  
Spot Now!!**

## PACEMAKER CLINIC

The Royal Melbourne Hospital's Cardiology Department is running a Pacemaker clinic for patients here at the North Shepparton Community and Learning Centre.

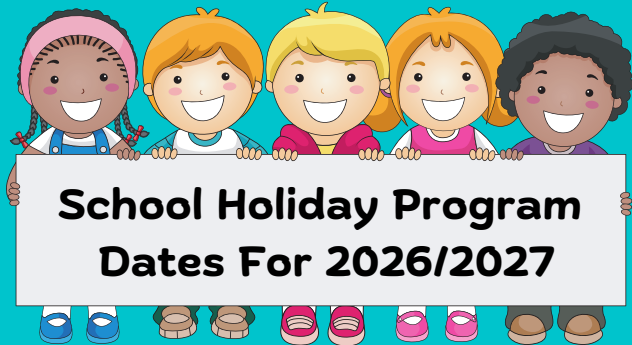
**Bookings are Essential.**

Please call the Royal Melbourne Cardiology Department on (03) 9342 7133 for more information.

**When:** Thursday - 03/09

**Time:** 9am - 4:30pm

# VACATION CARE



21<sup>st</sup> September - 2<sup>nd</sup> October, 2026

11<sup>th</sup> January - 22<sup>nd</sup> January, 2027

Do you work during the school holidays and need care for your primary school aged children?

NSCLC runs a school holiday program 2 weeks of every Victorian School Holidays with fun activities and excursions to suit primary school aged children's interests.

**Days:** Monday to Friday (excluding public holidays)

**Venue:** North Shepparton Community Hub  
10-14 Parkside Drive, Shepparton, Victoria

**Cost:** \$7.97 - \$55 a day

**Childcare Subsidy (CCS) is available for eligible families.**

# SUPPORT GROUPS

## MS PEER SUPPORT



This is a support group for people living with multiple sclerosis and carers. We are an active group splitting our meetings between education and actively participating in an external outing/ event program. Members are empowered, gain self-esteem and self-respect through participation of our educational sessions, research information and trying new activities.

**When:** Tuesday bi- monthly - 18/08

**Time:** 9:30am - 12:45pm

**Facebook page:** Shepparton MS Peer Support

**Phone:** 1800 042 138 for more information.

## WE LISTEN SUICIDE LOSS SUPPORT GROUP



When someone dies by suicide, the loved ones left behind often must deal with an array of their own emotions. It can be difficult to discuss with people who have not had the same experience. Some people feel that they are not able to share their feelings or story due to stigma or suicide being a taboo topic.

This support group is a safe supporting space to share your grief, and support others.

**Day:** Second Wednesday of the month - 12/08, 09/09

**Time:** 6pm - 7:30pm

**Email:** admin@welisten.org.au for more information

**Facebook page:** We Listen Suicide Loss Support Group

**Phone:** Steve on 0400 314 858

## ALCOHOLICS ANONYMOUS



Having trouble with alcohol? Does your drinking worry you? Is it causing you to get into unpleasant or dangerous situations? Are family members in need? Complaining about your drinking? Then the AA program of recovery may be able to help you!

**Day:** Every Friday including public & school holidays

**Time:** 8pm - 9:30pm

# SERVICES AVAILABLE

- Photocopying and Printing
  - black and white A4 Single Sided .10 cents, A4 Double Sided .20 cents
  - colour A4 Single Sided .20 cents, A4 Double Sided .40 cents
- Scanning -\$2.00 per transmission
- Emailing - \$2.00 per transmission
- Laminating- A4 \$3.00, A3 \$4.00
- Passport Application and Renewal - \$15
- Birth/ Marriage Certificate Application - \$5
- Citizenship Certificate Application- \$15
- Working with Children's check or Police Check- \$5
- MyGov, Centrelink - \$10 per half hour
- Other online and tech support - \$15 per half hour
- Typing and resume writing, would you like your resume or CV typed and printed?

Call in to discuss about our staff assisting you with your presentation.

**Resume** - \$25.00

**Cover Letter** - \$10.00

# SOCIAL GROUPS

## NORTH SHEPPARTON COMMUNITY HUB PLAYGROUP

This playgroup is free, and suitable for children of all ages (birth up to Pre-school age) Our sessions include a variety of art and craft activities, sensory play such as play dough and story time and rhyme time fun! Free tea/coffee/milo. All parents, carers and their children are most welcome to attend.

**Feel free to give Jen a call on - 0488 567 038 for further information**

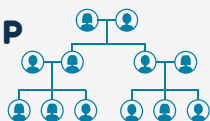
**Day:** Every Monday (Victorian School Term only)

**Time:** 9:30am - 11am

**Cost:** Free



## FAMILY HISTORY GROUP



Family history social group meets up once a month to

**Day:** 4<sup>th</sup> Monday of Every Month (Victorian School Term only)

**Time:** 10am - 12:00pm

**Cost:** Free

To book in please call reception on (03) 5821 5770

## STRAWBERRY PATCHERS

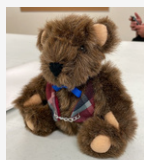
A quilting group

**Day:** Every Tuesday (Victorian School Term only)

**Time:** 9am - 12:00pm

**Cost:** \$2

## BEAR MAKING



Come along and learn how to make your very own teddy bear. Every 4 weeks you will make a new bear. Everything you need is provided. All bears are hand sewn. **Bookings Essential.**

**Day:** Every Tuesday (Victorian School Term only)

**Dates starting new bear:** 14/07, 11/08, 08/09

**Time:** 12:30pm - 3pm

**Cost:** Maximum \$14 a bear (Price will vary from bear to bear)

For more information or to book in please call reception on (03) 5821 5770

## COMMUNITY SHED



If you like creating things with your hands, why not come and check out our Community Shed. The shed is open to all those 17 years and over. If you would like more information, call us on (03) 5821 5770 or pop into the centre. **All Welcome**

**Day:** Every Wednesday (Victorian School Term only)

**Time:** 9am - 3pm

**Cost:** Free

## SOCIAL CRAFT



Do you enjoy crafting but are sick of doing them at home alone? Would you like to meet new people who also enjoy crafting. Then this could be the group for you.

Bring along your craft project and have a chat with the group.

**Day:** Every Wednesday (Victorian School Term only)

**Time:** 11am - 2:30pm

**Cost:** Free

## THE APPLIQUE GUILD

The Applique Guild of Australia (TAG) is a group of patch workers who are interested in the Applique technique, both by hand and machine. Come along have a chat, applique and share your techniques and accomplishments.

**Phone:** Gael on 0458 215 794 for more information

**Day:** Thursday once a month - 16/07, 20/08, 17/09

**Time:** 10am - 1pm

**Cost:** \$5

## OIL PAINTING



The Oil Painting group is fun and social. Come along with your own materials (canvases & paints not supplied), have a chat & some laughs while working along at your own pace.

**Day:** Every Thursday (Victorian School Term only)

**Time:** 1pm - 3pm

**Cost:** Free

## CRAFT FOR A CAUSE



Craft for a Cause is a group of volunteers who knit and crochet items to donate to people in need. The group is seeking volunteers to help continue the great work they already do. If this sounds like something you would like to be a part of bring along some lunch, have a chat and create something beautiful.

**Day:** Every Friday (Victorian School Term only)

**Time:** 10am - 1:00pm

**Cost:** Free

# WORKSHOPS

## KITCHEN CHAIR UPHOLSTERY WORKSHOP - LEARN TO TRANSFORM YOUR FURNITURE!



Do you have a kitchen chair (or not) that you've always wanted to completely revamp? Discover the art of upholstery in this hands-on two-day workshop! If you wanted to give an old kitchen chair new life, this course equips you with the essential skills to complete your own project.

### What You Will Learn:

- Choosing and measuring fabric effectively
- Cutting foam

### Tools and Materials:

All necessary tools provided, including safety gear

Bring your kitchen chair or use a chair provided

**Optional:** bring your preferred fabrics or choose from our selection

**Cost:** \$90 chair provided

\$60 bring your own chair

**Now taking expression of interest**

---



## CREATING A SPREADSHEET

Take control of your Finances with Microsoft Excel!

Are you ready to master your money and build a clearer financial future?

Join our hands-on 3-hour workshop and learn how to create, manage and track a personal or household budget using Microsoft Excel!

### What You Will Learn:

- Step by step guidance for creating a spreadsheet
- Categorising income and expenses efficiently
- Using formulas to calculate totals, savings and projections
- Designing charts and graphs to visualise your spending habits
- Tips for setting financial goals and monitoring progress

### Who Should Attend:

- Beginners new to creating a spreadsheet
- Anyone looking to gain confidence in Excel
- Anyone wanting to improve financial planning and savings

**Bonus:** Each participant will receive a ready - to - use spreadsheet template for Excel.

**Cost:** \$15

**Now taking expression of interest**

# COMPUTER USAGE

Internet and computers are available for the community to use during non -computer class times. Please call to make sure they are available to save disappointment. Users must check in at reception upon arrival.

**Cost:** Free usage

.10 cents per printed sheet

# FIRST AID TRAINING

PROVIDED BY:



## HLTAID009-Provide Cardiopulmonary Resuscitation (CPR)

**Cost:** \$70

## HLTAID011 - Provide First Aid

This is a short course designed to develop the knowledge and skills to provide basic first aid and manage the casualty(s) and the incident.

**Cost:** \$175

## HLTAID012 - Provide First Aid in an Education and Care Setting

This unit specifies the outcomes required to provide first aid in a range of education and care settings to manage the incident and response and communicate with others involved in the treatment or response.

(Includes Asthma and Anaphylaxis training)

**Cost:** \$225

## 22556VIC - Course in Management of Asthma Risks and Emergencies in the Workplace

This course is designed to develop the skills and knowledge to enable the giving of assistance to a person having an asthma attack in the workplace administer with the casualty(s) own asthma bronchodilator medication or the organisations asthma first aid equipment.

**Cost:** \$65

## 22578VIC - Course in First Aid Management of Anaphylaxis

This will provide participants with the skills and knowledge to assist a person suffering & anaphylactic reaction until the arrival of medical assistance.

**Cost:** \$65

## Updates and Combined Classes

- Anaphylaxis & Asthma Management - **Cost:** \$115
- CPR Update - **Cost:** \$70
- Level 2 First Aid, Anaphylaxis & Asthma Management - **Cost:** \$225
- Anaphylaxis, CPR & Asthma Management - **Cost:** \$175

A USI number will be required to complete any of the above courses.

To create one if you do not already have one, please go to [www.usi.gov.au](http://www.usi.gov.au) or contact our office on (03) 5821 5770 for assistance.

We can organise group bookings for over 15 people. These courses can be customised to the individual group needs. Please call us on (03) 5821 5770 to organise individualised training for your organisation.

**FEES AND DATES ARE  
SUBJECT TO CHANGE**

# ROOM HIRE



North Shepparton Community & Learning Centre offers a range of rooms available for hire for training sessions, meetings, support groups, and social groups.

## Conditions apply.

Room hire fees apply to all bookings and range from \$10 to \$180, depending on the room and booking requirements.

Additional equipment can also be hired for an extra charge, with equipment hire fees ranging from \$5 to \$50.

For further information or to discuss your booking needs, please contact reception on (03) 5821 5770.



North Shepparton Community & Learning Centre is supported by the Victorian Government:

# OUR LOCATION



North Shepparton Community & Learning Centre is located in the North Shepparton Hub at 10-14 Parkside Drive, Shepparton. To get to us travel north out of Shepparton on Numurkah Rd/ Goulburn Valley Highway, turn left into Brauman Street. Stay on this street as it becomes Parkside Drive after the roundabout. We are on the left hand side opposite Banmira Specialist School Junior Campus. The town bus route stops beside the hub and we have a car-park for those driving available at the Hub itself.

## FINANCIAL MEMBERSHIP

Would you like to have a say concerning your community & learning centre?  
You can do so by becoming a financial member for just \$3.00 a year.  
Please pop in and fill out a membership form.

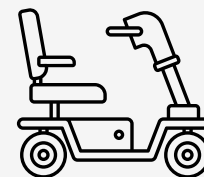
## SUGGESTIONS

Do you have a skill or interest you would like to share with others?  
If so, then pop into North Shepparton Community & Learning Centre and share your ideas with us!  
Perhaps you are part of a support or social group looking for somewhere to meet. Pop in for a chat and have a look at the rooms available or give reception a call on (03) 5821 5770.

## DISABILITY ACCESS



NSCLC welcomes all members of the community and provides disabilities access to all facilities. Motorised and Electric scooter users are welcome to recharge their scooters on site.



# HELPING HAND

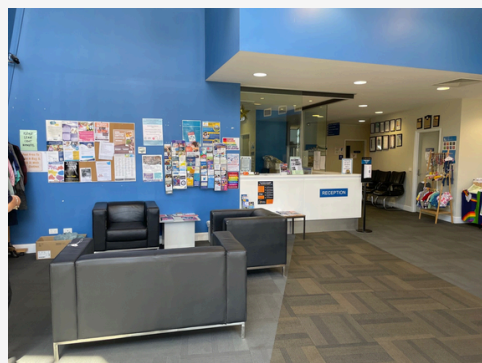
## FREE SHOWER

If your bathroom is being renovated, or you're currently without a place to stay and need a shower, you're welcome to visit the hub and use our facilities. We also provide towels and basic toiletries to help you feel refreshed and comfortable.



## POP IN FOR A CHAT

Feel free to drop in for a chat anytime—no reason needed, just come and say hello. If it's cold outside or you need a break from the rain, you're always welcome to step in, warm up, and enjoy a hot drink. Help yourself to tea or coffee and make yourself comfortable.



## BOOK NOOK

If you love a good read, you'll feel right at home here. We've created a cosy book nook in our foyer where you're welcome to relax, browse, and enjoy. Whether you'd like to read, swap, borrow, or take a book with you, there's something for everyone. With a wide selection of books and magazines to choose from, it's the perfect spot to unwind and discover your next favourite read.



## COMMUNITY CLOTHES RACK AND BRICK A BRAC



what's new. We also offer a variety of bric-a-brac and household items, so feel free to have a browse—you never know what hidden gems you might find!

Why not drop in and explore our FREE clothing area? We have a great range of clothing for both adults and children. New items are added regularly, so there's always something fresh to discover—be sure to visit often and see



# SHEPPARTON BUS NETWORK



Bus route

MAP NOT TO SCALE  
Effective December 2023



For more public transport information  
visit [ptv.vic.gov.au](http://ptv.vic.gov.au), use the **PTV app** or call **1800 800 007**.  
Authorised by the Department of Transport and Planning, 1 Spring Street, Melbourne



**The North Shepparton Community Hub is accessible from the following bus route:**

**Route 2: Parkside Gardens via The Boulevard**

**Route 3: Golf Drive/ TAFE**

# SMALL MOTOR REPAIR SHOP



## KEEP YOUR GARDEN GEAR RUNNING SMOOTH!

We're excited to now offer repairs and maintenance on whipper snippers, push mowers, and leaf blowers.

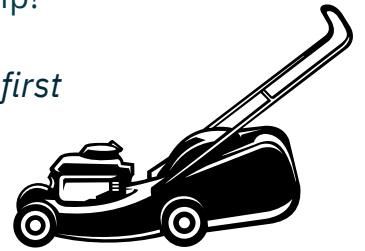
We also provide standard servicing for whipper snippers, push mowers, leaf blowers, and hedge trimmers – so your equipment stays reliable and ready when you need it.

Got something that's not running quite right? Or just due for a service?

Get in touch with us to book it in – we're here to help!



*First Time Customers: Enjoy a 10% discount on your first Standard Service! Just mention this advertisement.*



### WHIPPER SNIPPER REPAIR/ MAINTENANCE

**Standard Service:** \$40 - \$80

Includes oil change (for 4-stroke), fuel system checks, trimmer head inspection, and much more. New Trimmer head will be charged at the RRP & is in addition to the estimated price indicated above.

**Replacement Parts Cost:** from \$10 - \$30

**Other:** Fuel System Cleaning: \$40 - \$60  
Oil Change: \$25 - \$35  
Renew Fuel Filter: \$10 - \$20

### WALK BEHIND/ PUSH MOWER REPAIR/ MAINTENANCE

**Standard Service:** \$50 - \$90

Includes oil change, blade & bolt checks, throttle adjustments and much more.

**Replacement Parts Cost:** from \$10 - \$40

**Other:** Blade Sharpening: \$10 - \$20  
Oil Change: \$20 - \$30  
Fuel System Cleaning: \$50 - \$70  
Renew Fuel Filter: \$10 - \$20

### LEAF BLOWER REPAIR/ MAINTENANCE

**Standard Service:** \$35 - \$70

Includes oil change, (for 4-stroke), fuel system checks, cleaning and much more.

This comprehensive service ensures your leaf blower is running efficiently & reliably.

**Replacement Parts Cost:** from \$10 - \$30

**Other:** Oil Change: \$20 - \$30  
Fuel System Cleaning: \$40 - \$60  
Renew Fuel Filter: \$10 - \$20



### HEDGE TRIMMER STANDARD SERVICE

**Standard Service:** \$40 - \$80

Includes oil change, (for 4-stroke), fuel system checks, cleaning and much more.

Due to the labour-intensive nature of sharpening hedge trimmer blades, we currently don't offer this service. For a more economical and reliable solution, we recommend replacing dull blades instead.



*If any additional repairs or parts are needed during servicing, extra charges may apply. We'll always contact you first to discuss the work and costs, and you'll have the option to approve or decline before anything goes ahead (unless you've already requested repairs at the time of booking).*

*We are unable to complete any work on battery operated or electrical equipment.*

*GST is excluded in all prices. Please note that 10% GST is applicable to all goods and services*

# Makers & Growers Market

Discover handmade creations, plants and local treasures all in one place. The Makers & Growers Market brings together talented local growers & makers for a day of community, creativity, and connection.

Enjoy a welcoming community atmosphere & support local businesses all in one place.

**Date:**  
25<sup>th</sup> October, 2026

**Time:**  
10am - 2pm

**Where:**  
10 - 14 Parkside Dr, Shepparton

Taking  
Expression of  
interest  
for stallholders

